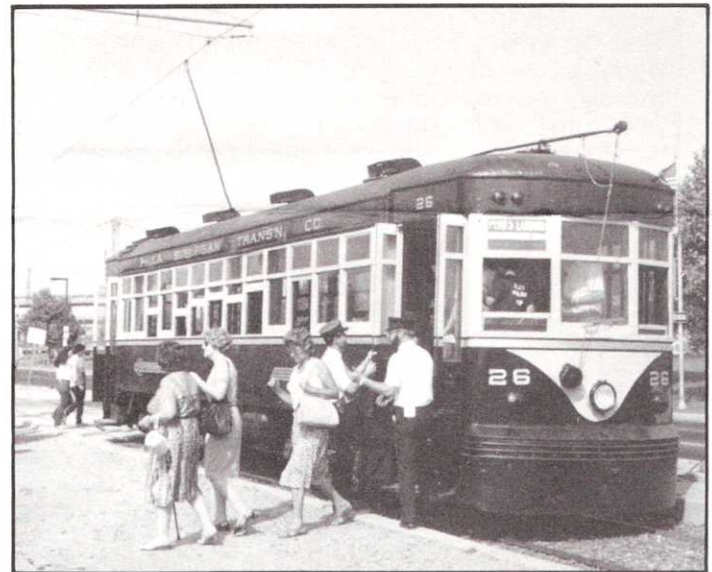


Take an old-fashioned ride on the

# PENN'S LANDING TROLLEY

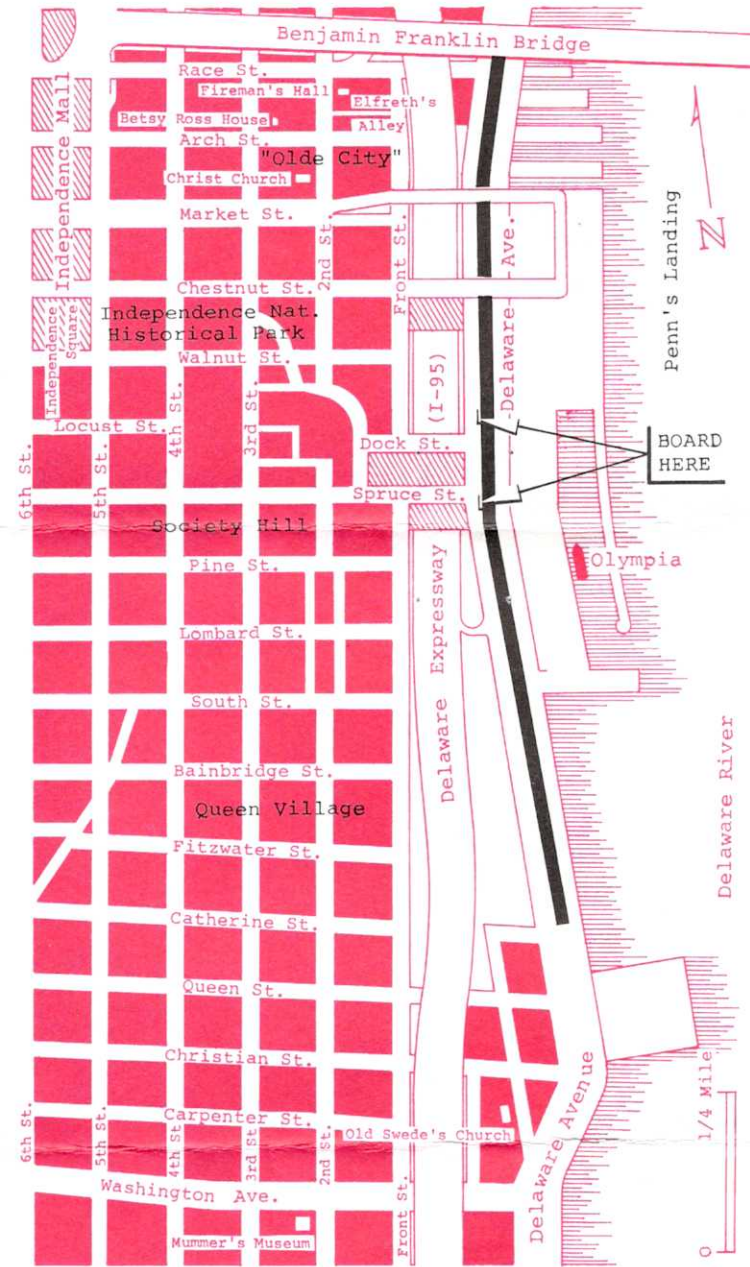
*along Philadelphia's  
historic waterfront ...*



**BUCKINGHAM VALLEY TROLLEY ASSOCIATION**

P.O. BOX 7285  
PHILADELPHIA, PA 19101

A Pennsylvania Non-Profit  
Educational Corporation



The Penn's Landing Trolley line on Delaware Avenue is easily reached by SEPTA bus and subway lines (please call area code (215) 574-7800 for specific routes); PATCO high-speed line from New Jersey; and the Center City Philadelphia southbound exit or the Tasker Street northbound exit from I-95 to Delaware Avenue. There are ample low-cost parking facilities in the Penn's Landing complex.

The Penn's Landing Trolley was established in 1982 as a cooperative project of the City of Philadelphia's Fund for Philadelphia Inc. and the Buckingham Valley Trolley Association. Continuing funding has been provided by grants from the Fidelity Bank.

# ALL ABOARD ...

for a delightful ride on an authentic turn-of-the-century trolley car along the historic Delaware River waterfront, with a guided tour by the trolley car conductor. The trolleys are electrically operated vehicles which originally served Delaware Valley area residents from 1904 to 1958, now carefully restored to a gleaming finish by the Buckingham Valley Trolley Association—volunteers dedicated to the history and preservation of American trolleys.

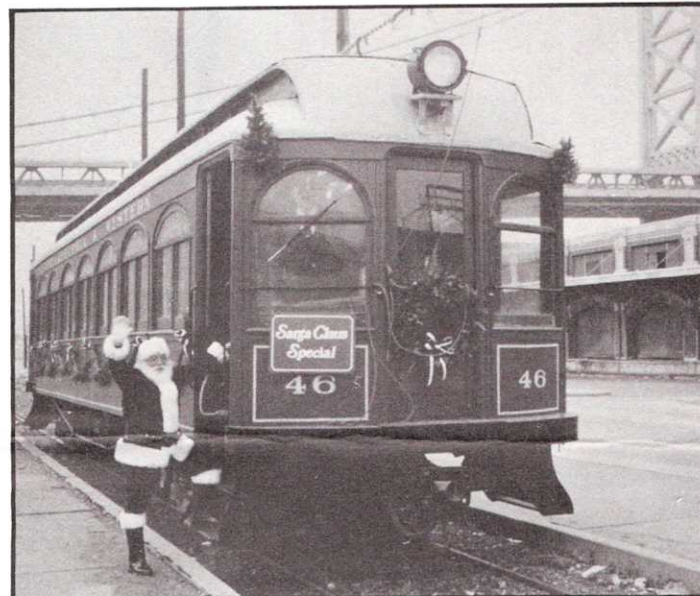
Here, where Philadelphia began its very existence 300 years ago, the Penn's Landing Trolley takes you on a nostalgic journey past such unique neighborhoods as Queen Village, Society Hill, and Olde City, as the trolley clangs merrily along its 20-minute round-trip excursion. With merchant vessels from around the world plying the Delaware River, the riverside vista takes in the Benjamin Franklin Bridge, the Port of History Museum, the International Sculpture Garden, and Philadelphia's own fleet of historic ships: the Tall Ships Gazela Primeiro and the Moshulu (the largest sailing vessel in the world still afloat), the Barnegat Lightship, the submarine Becuna, and the U.S.S. Olympia which served as Admiral Dewey's flagship at Manila Bay.

Board the trolley on Delaware Avenue at either Dock Street or Spruce Street after buying your tickets from the platform dispatcher or at the Spruce Street ticket office of the cruiser Olympia. Trolley fare is \$1.50 for adults and 50 cents for children under 12.

The Penn's Landing Trolley is available for Birthday Parties and other Special Occasions. For Group Rates and Charter Information or Membership Application, please call (215) 627-0807.

## 1987 DATES OF OPERATION

Ride the Penn's Landing Trolley from 11 AM to dusk, weekends and holidays from April 12th through December 6th. Also operates Thursday and Friday, June 18th to Labor Day.



HAVE THE YOUNGSTERS MEET SANTA ON A TROLLEY!



**SANTA  
CLAUS  
SPECIAL**

SATURDAY, DEC. 12  
SUNDAY, DEC. 13

**TROLLEY RIDES ... SOUVENIRS ... FUN  
SPECIAL FARE FOR ADULTS AND CHILDREN  
BY RESERVATION ONLY**

CALL (215) 627-0807 AFTER NOVEMBER 1st FOR INFORMATION

